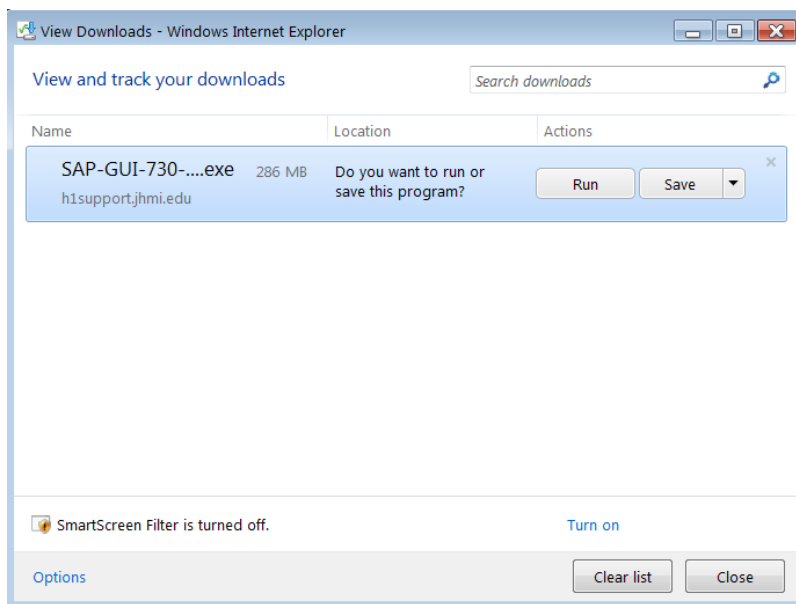


SAPGui 7.30 (Patch Level 1) Client Installation – Windows Others

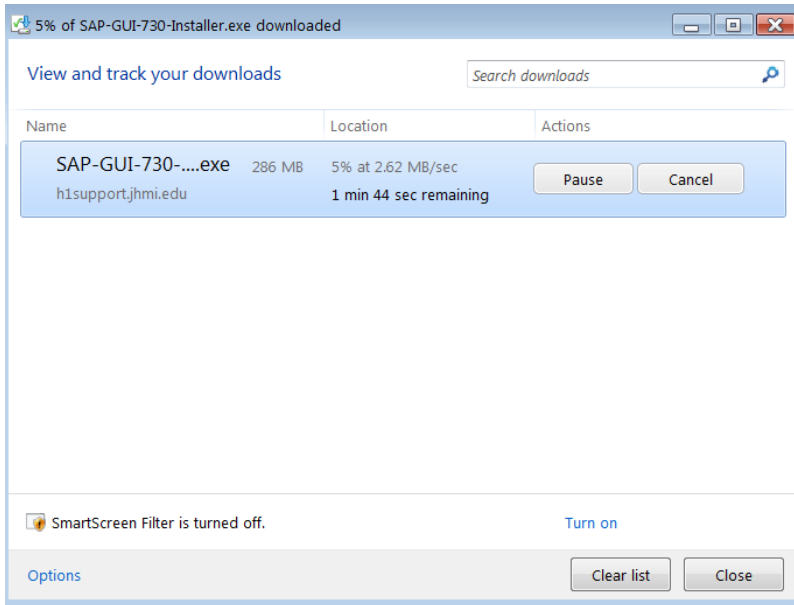
Perform SAPGui Installation

1. Click [here](#) to begin.
2. **If you have IE 9, you will get this notification.**

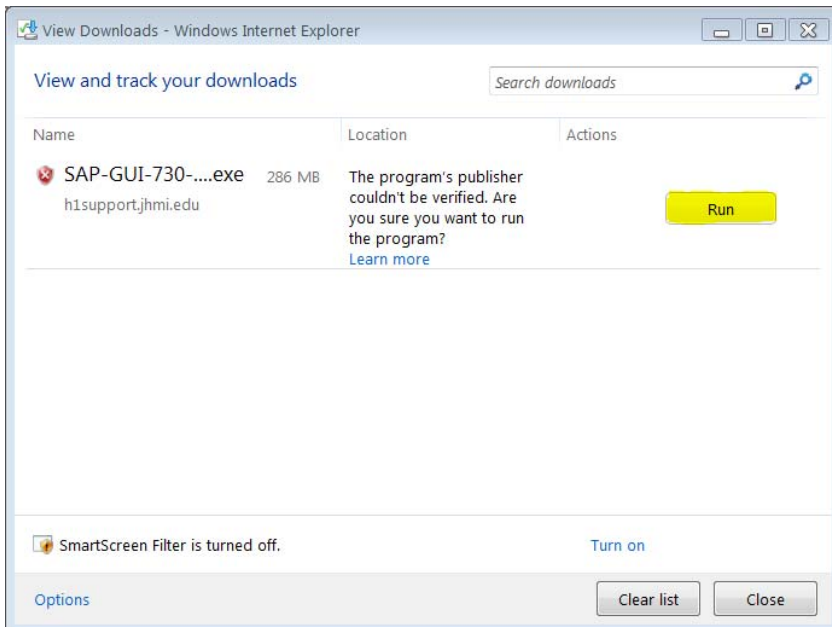
Press 'Run' to start the download.



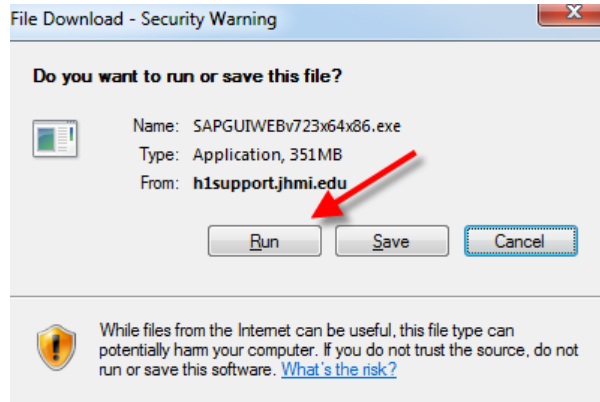
It will download



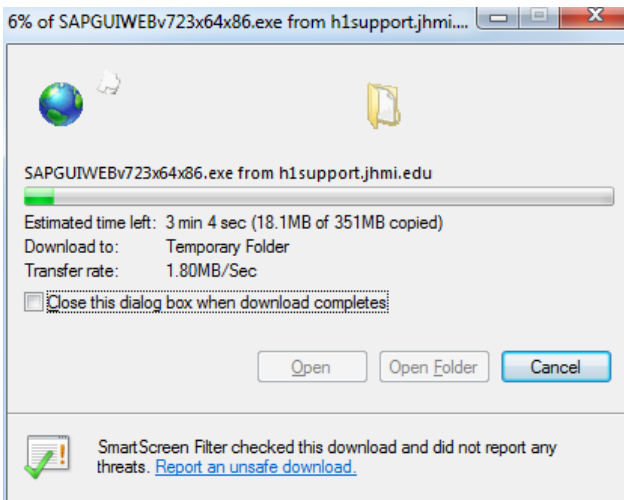
Select **'Run'** to start the installation.



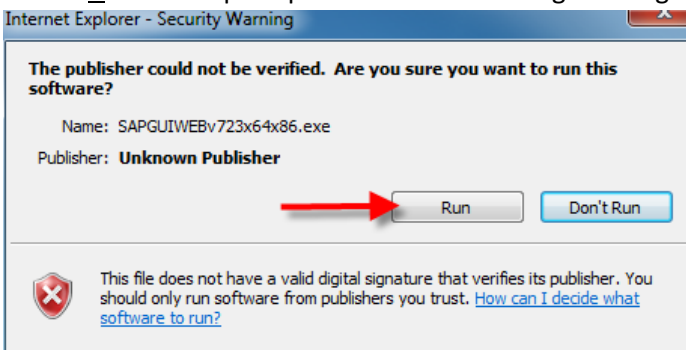
If you have IE 8, you will get this notification. Select **'Run'** to start the installation.



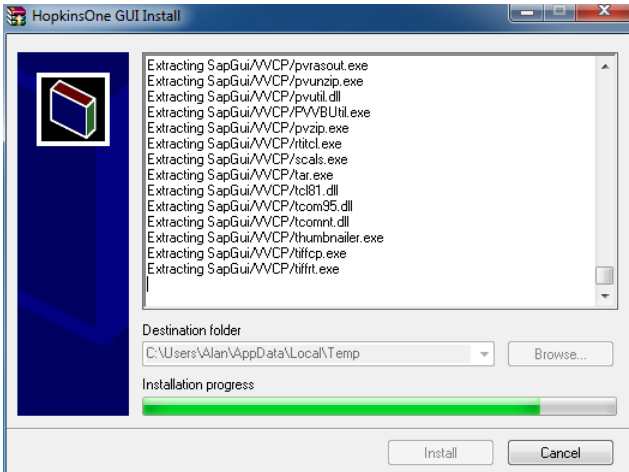
The SAPGui installation package will begin downloading to your computer.



3. Select '**Run**' when prompted with the following warning.

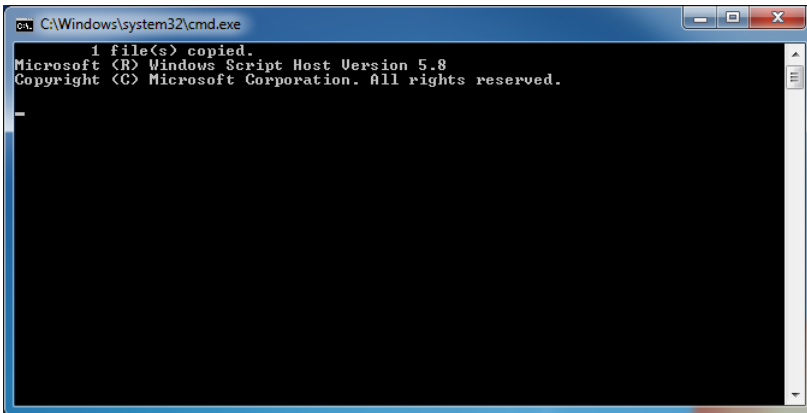


The installation package contents will be extracted to your computer.

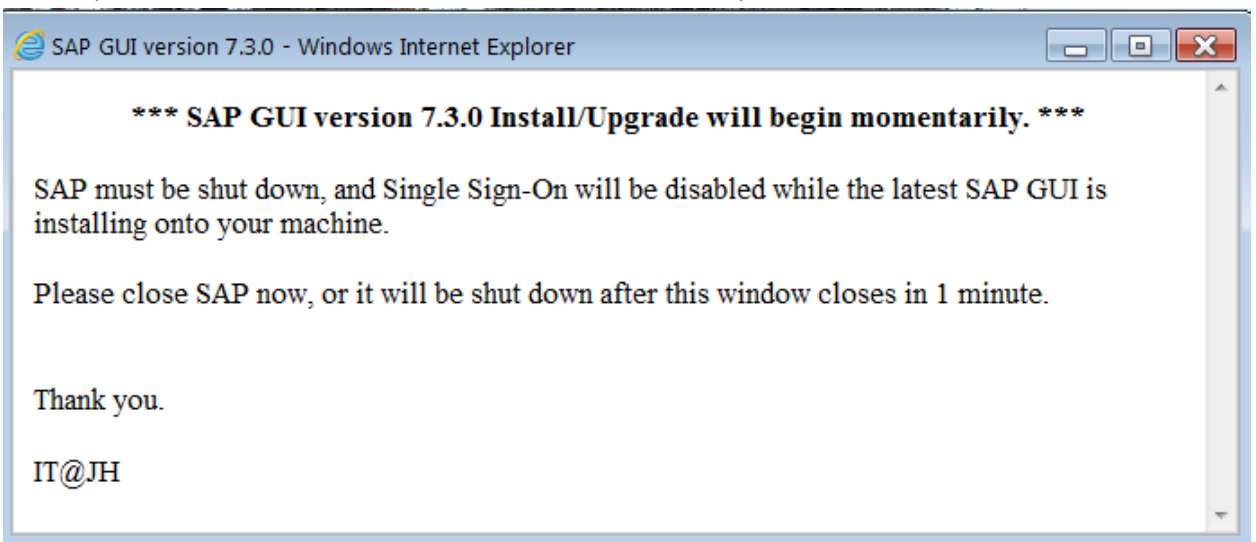


4. Once the extraction is complete, and if you have successfully turned off UAC, the next two dialog windows will be opened on your desktop.

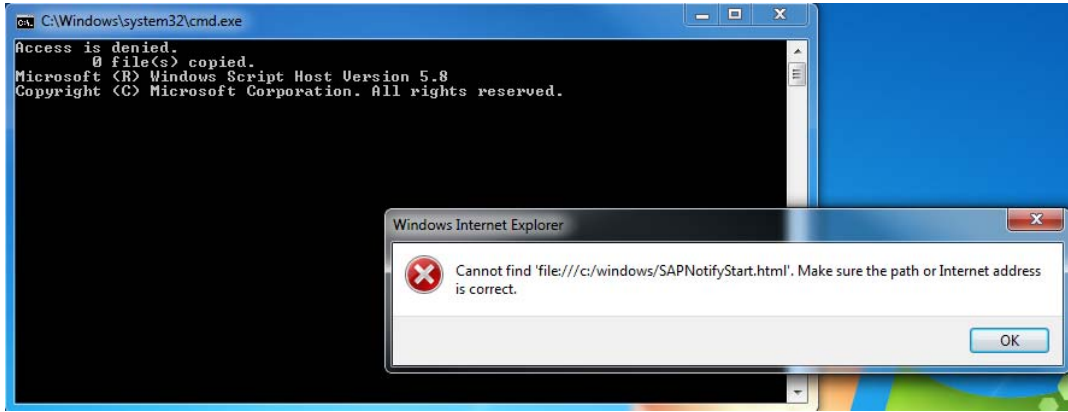
Please do not close this dialog window!



You may close the window, or wait until it closes automatically.

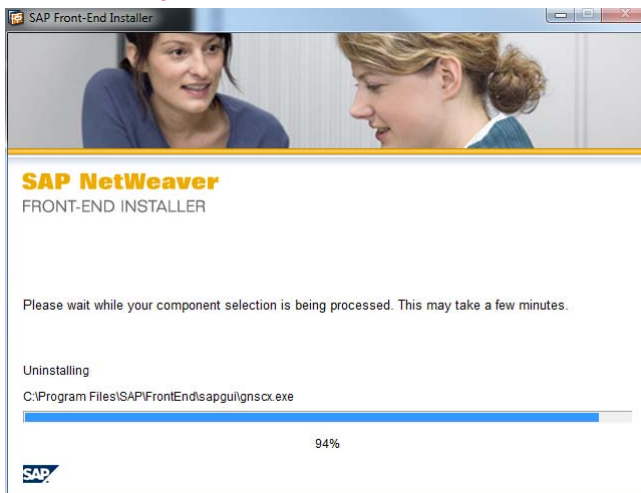


Note: If you receive the error message below, UAC has not been properly disabled. Please close the dialog windows and repeat the steps to [Turn Off User Account Control](#) and then restart the steps to [Perform SAPGui Installation](#).



5. If there is another SAPGui client present on your computer, it will be removed before the new version is installed. Otherwise, you will not see the screen below.

Please do not close this window. Once the SAPGui is removed, this window will close automatically.



6. The installation process will continue. **Again, please do not close this window until notified that the installation is complete.**

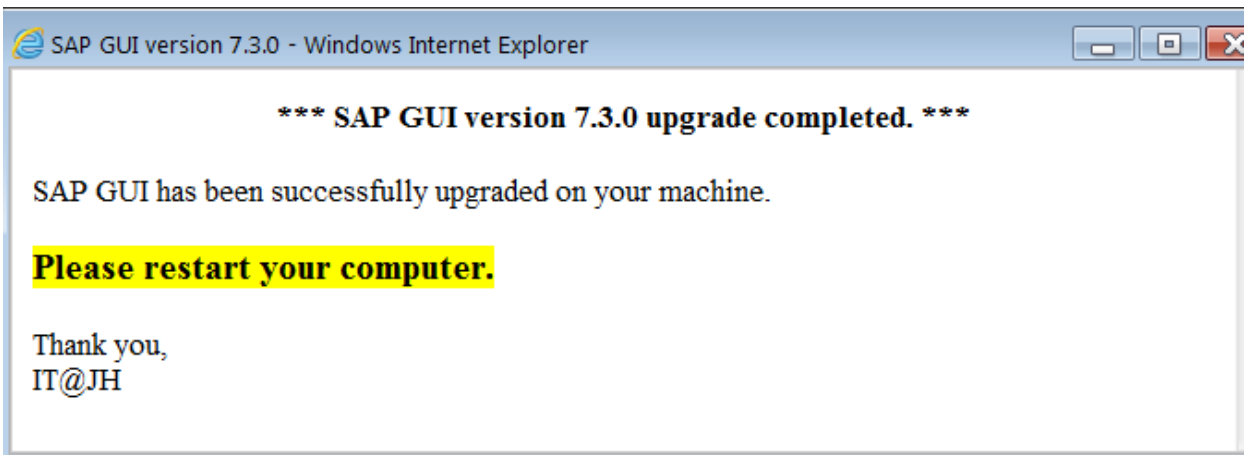
```
C:\Windows\system32\cmd.exe
1 file(s) copied.
Microsoft (R) Windows Script Host Version 5.8
Copyright (C) Microsoft Corporation. All rights reserved.

PsKill v1.11 - Terminates processes on local or remote systems
Copyright (C) 1999-2005 Mark Russinovich
Sysinternals - www.sysinternals.com

3 processes named iexplore.exe killed.

ERROR: The process "SSOManHost.exe" not found.
ERROR: The process "ISXAgent.exe" not found.
ERROR: The process "SSOWOW64Bridge.exe" not found.
ERROR: The process "ISXAgent64.exe" not found.
ERROR: The process "SAPgui.exe" not found.
ERROR: The process "SAPLogon.exe" not found.
1 file(s) copied.
1 file(s) copied.
```

7. Once the SAPGui is fully installed you will be notified with the dialog window below. You may close this window, or wait until it closes automatically after approximately 1 minute.



8. At this time you may close any other open dialog windows, such as the one below. Again, you may also wait until it closes automatically after approximately 1 minute.

9. Reboot the PC.

```
C:\Windows\system32\cmd.exe
Unable to kill process SAPgui.exe:
Process does not exist.

PsKill v1.11 - Terminates processes on local or remote systems
Copyright (C) 1999-2005 Mark Russinovich
Sysinternals - www.sysinternals.com

Unable to kill process SAPLogon.exe:
Process does not exist.
The operation completed successfully.
The operation completed successfully.
The operation completed successfully.
The operation completed successfully.
Could Not Find C:\ProgramData\Desktop\HopkinsOne.url
Could Not Find C:\ProgramData\Start Menu\Programs\HopkinsOne.url
1 file(s) copied.
1 file(s) copied.
1 file(s) copied.
The system cannot find the file specified.
Could Not Find C:\ProgramData\Desktop\SAP Logon.lnk
1 file(s) copied.
Microsoft (R) Windows Script Host Version 5.8
Copyright (C) Microsoft Corporation. All rights reserved.
```

Post Installation

After the new SAPGui has been successfully installed on your computer, you should see on your desktop the icon used to access SAP.



Please begin to use SAP@JH as your link to access SAP.



If for some reason you also still have the old icon [HopkinsOne](#) it may be deleted.

Support issues

Please contact your Support Personnel with any questions, or concerns, you may have with the installation procedures. If you have any usability issues with this new version of the SAPGui, please contact SAPHelpDesk@jhmi.edu.

Thank you.